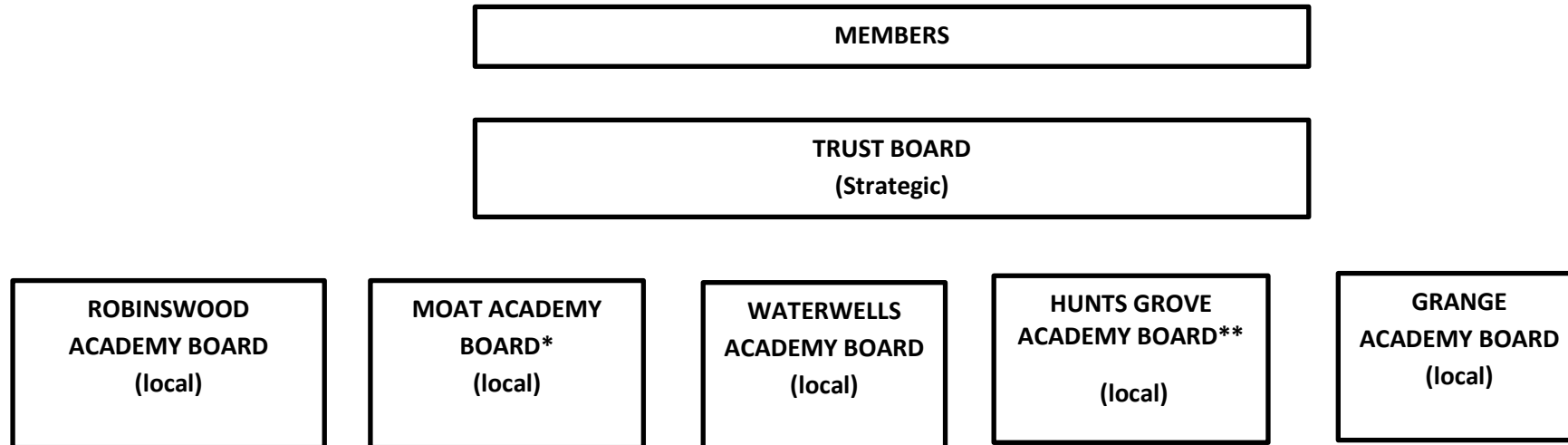


THE ROBINSWOOD MULTI ACADEMY TRUST

GOVERNANCE STRUCTURE

The Multi Academy Trust (MAT) has a governance structure in place across the four schools. The roles and responsibilities of the Trust and Academy Boards are made clear through the scheme of delegation which has been shared with members of all board.



*to ensure that governance could be established immediately at the time of conversion, the Robinswood Academy Board are currently overseeing the development and business of the Moat Academy Board. It is intended that we will establish the Moat Academy Board as a separate entity at the beginning of the A/Y 19/20. .

**Whilst Hunts Grove is being accommodated at Waterwells Primary Academy, the work of the school will be monitored by the Academy Board at Waterwells. The Head of School and a parent representative of Hunts Grove will join this board this group initially. The need to set up a separate group completely will be reviewed on a regular basis.

The Trust employs a company secretary who is responsible for compliance and works closely with the Trust Board to advise on legal matters and general 'governance'.